



Specialists in insurance, residential & commercial roofing

CAPABILITY STATEMENT



“

SHM Roofing is a valued partner, servicing our clients for the last 5 years and delivering high-quality works over our residential and commercial projects on time and on budget.”

— Michel Ellul, NSW Manager
Commercial Insurance, Rizon

OUR SUPPLIERS



About SHM Roofing

Established in 2009, SHM delivers high-quality, reliable roofing solutions to the public and private sector. As a fully Australian-owned and operated company, we offer rapidly deployable resources, equipment, and expertise all across NSW & QLD, scalable to the demands of large, Tier 1 commercial projects.

Our operations are guided by structured processes, extensive quality controls, and transparent communication, ensuring zero variation from quote to commissioning. Supported by modern software, we also provide accurate, detailed project scoping and reporting, employing an in-house tradebase to follow-through and ensure the highest level of work.

For SHM, it's more than just a job - it's about delivering a solution that is guaranteed to stand the test of time.

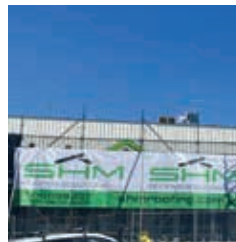


Shannon May
Director

Shannon May and his team bring over 50 years of combined industry experience. Under his guidance, SHM delivers quality, large-scale projects to the commercial, government, strata, and residential sectors. Shannon's leadership, combined with a strong network of trade contacts and established relationships with logistic companies, allow SHM to control any job from start to finish, delivering across all of NSW.



Our Services



REMEDIAL

We repair structural defects caused by weather damage, natural disasters, and more.



INSTALLATION

We install and commission new builds for large-scale, commercial roofing projects.



REFURBISHMENT

We perform major refurbishments, restoring and upgrading existing roof structures.

Our Projects

Villaggio Italiano Sant'antonio Aged Care Facility

Structural repair and replacement of 18,000m² hail damaged roofing

The Villaggio Italiano Sant'antonio Aged Care Facility project involved site-wide repair and replacement of damaged roofs following a major hail storm event. The scope of the project covered 32 villas and several main communal buildings, spanning a total of 18,000m².

Working quickly to restore safe living conditions, SHM coordinated with village management in the replacement of sheeting, roof battens, Building blanket, safety mesh, gutters, and skylights. Combined with managing and installing a safety rail system throughout all buildings to facilitate the repairs. During the project, the aged care facility was able to remain fully operational, with the planned works being completed based around the movements of the residents.



“

I can say from myself and our team at Paynters that it was an absolute pleasure to work with SHM and you went above and beyond to make the project a success.”

— Hamish Bell, Villaggio Project Manager, Paynters

Lindsays Transport Centre, North Coast NSW

Office roof replacement and industrial facility upgrade

SHM Roofing was commissioned by Lindsays Transport, a national logistics company, to carry out the large-scale replacement of all roofing across their North Coast transport centre. The project included factories, loading docks, mechanical and body repair workshops, and other essential facilities.

We ensured minimal disruption to daily operations, allowing the business to remain fully operational throughout the works. Our team coordinated multiple trades, including electricians, scaffolders, crane operators, and plumbers, ensuring seamless project delivery and adherence to the builder's reference requirements.



The Lucky Hotel, Newcastle

Specialist EB Panel installation for a popular beer garden

SHM Roofing was engaged to install a specialised EB Panel product, supplied by Danpalon Australia, for The Lucky Hotel's renowned beer garden. The project demanded precision, with a strict four-day completion window to minimise disruption.

Our team worked day and night, using birdcage scaffolding and organising overnight crane lifts to comply with council regulations and manage road closures. Despite these challenges, the beer garden remained operational, with the works completed on time and to the highest standard.



Koppers Aluminium

Office roof replacement and industrial facility upgrade

In 2024, SHM Roofing completed the full replacement of the office roofing system at Koppers Aluminium. This project was part of a broader facility upgrade, ensuring the site's infrastructure is fit for future operations. Our team executed the work with minimal disruption, delivering a high-quality roofing solution tailored to the client's industrial needs.

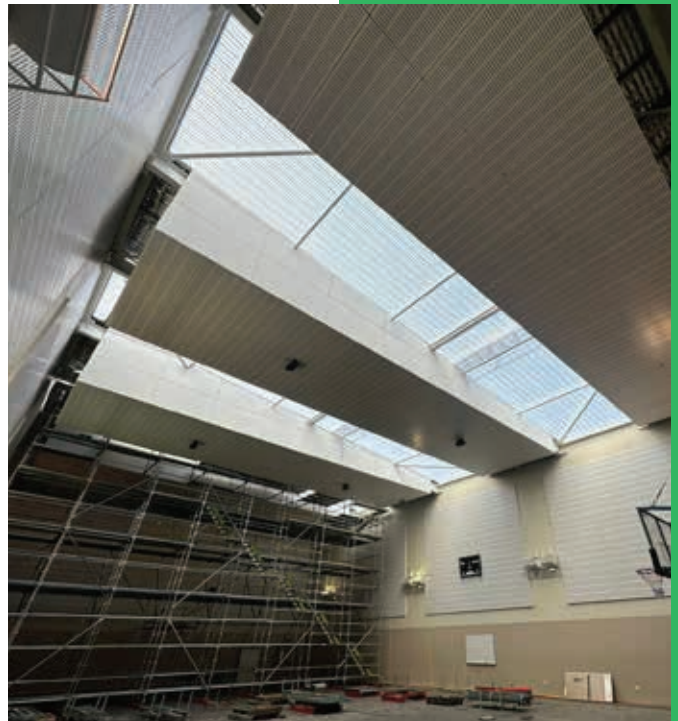


Armidale University Basketball Stadium

Counter-levered scaffold installation and EB Panel replacement

The Armidale University Basketball Stadium project involved the replacement of an EB Panel roofing system using complex scaffolding techniques. SHM Roofing engineered the floor to safely support the scaffold loads, ensuring the smooth and safe completion of the work.

This large-scale job required precise planning and execution to replace the roofing with minimal disruption to the stadium's operations, further highlighting our expertise with specialised products and engineering solutions.



NSW Schools Project

Collaborations with leading building companies on school projects

SHM Roofing is actively collaborating with prominent building companies to deliver high-quality roofing solutions for schools across New South Wales. These projects include both new constructions and replacements, ensuring durable and reliable roofing systems tailored to the needs of modern educational facilities.



Quality Assurance Protocols



NEARMAPS

SHM uses Nearmaps to source high-resolution, up-to-date aerial maps and geographical insights – an invaluable tool for scoping roofing solutions. With accurate, detailed information, we can plan more comprehensively and make better informed decisions.



EMPLOYSURE

Employsure provides SHM with third-party compliance, safety documentation, and employee management services. This guarantees that we follow all workplace regulations, both internally and on-site, to mitigate risk and promote worker health & wellbeing.



PRIME ECOSYSTEM

Prime Ecosystem is a custom workflow tracking and management system that centralises SHM's operations. Using this tool, we ensure prompt and traceable communication, as well as immediate retrieval of project records, schedules, defect reporting, and more.



TRUSTED NETWORK OF TRADESPEOPLE

We ensure quality and reliability in roofing solutions by requiring employees to have police and WWC checks. With an extensive network of trades and resources, we can manage large roofing projects, addressing challenges as they arise.

Our Coverage

Throughout Sydney City, Central Coast, Newcastle, Hunter region, and more, SHM's, experienced teams offer a prompt and professional service across NSW & QLD.

Fast rollout

We have a mobile, deployable fleet, able to get on-site and working within the tight demands of large projects.

Always available

Contact us anywhere, at any time. Our roofing specialists are always available for consultation and emergency assistance.



THE SHM PROMISE



AUSTRALIAN OWNED

Local expertise and always accessible support



QUALITY CONTROL


High standards and client satisfaction guaranteed



MODERN TRACKING

Advanced, transparent solutions for project delivery



 3A/14 Barralong Rd
14 Barralong Rd, Erina NSW 2250

 **1300 636 257**

 shmroofing.com.au

